

Array

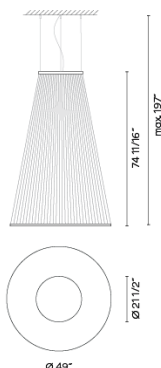
1880

Design By Umut Yamac

The large-scale conical silhouette hanging Array lamp wraps around the space rather than dominating it thanks to the spacious spread of the filaments creating a translucency through the volume it occupies.

VIBIA

Spec sheet



Optional: Extra cable length
Min. Quantity, upcharge and extra lead time apply

Finish	37 Terra Red NCS S 4040-Y70R
	24 Beige M1 NCS S 2005-Y50R
	47 Green L1 NCS S 4005-G80Y

LED color temperature 2700 K

Dimming 0-10V

Installation type Remote Micro / Surface

Materials
Upper ring: Aluminum
Bottom ring: Brass
Diffuser: PC- Polycarbonate
Threads: PES FR

Light source 1 x LED STRIP 76W 48V

LED CRI>90 9196 lm 121 2700 K

Driver Constant Voltage 100~277 V V
50~60 Hz HZ

Dimmable LED IP20 Multi-volt

UL Dry Location 50-60Hz 0-10V

Application Pendants

Packaging
1 Box
4.72 m x 53.15 m x 53.15 m
Gross weight 50.22
Net weight 28.19
Vol. 7.7234

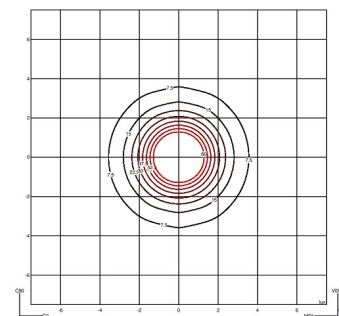
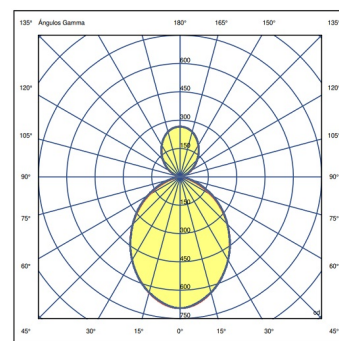
Lighting effect

General lighting

Lamp for general lighting that equally distributes the light in all directions.

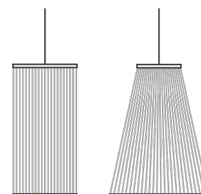


Photometric Data



Efficiency	100%
Coordination System	CG
Total Flux	2047 lm
Maximum Value	695.34 cd

Other Applications



VIBIA, INC.

USA & CANADA
272 Fernwood Ave. Edison, NJ 08837. USA
Phone 732 417 1700 sales@vibia.com www.vibia.com/us/usa

HEADQUARTERS
Progrés 4-6. 08850 Gavà
(Barcelona - Spain)